

## TOOLS AND SYSTEMS FOR PRECISION IN SANDING TECHNOLOGY

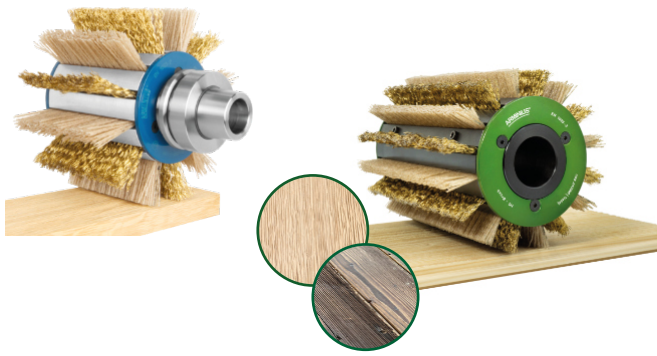
High flexible profile sanding tool

---

**ARMINIUS<sup>®</sup>**  
*tooling*

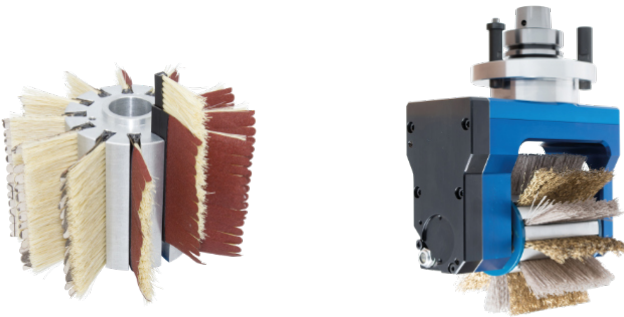


# ARMINIUS® Brush Systems



## Structuring Brush

With the structuring brush, you can texture the wood surface to suit your requirements, which you can achieve with a mix of materials, e.g. brass and andalon/ plastic. As an interesting design feature, the surfaces of real wood fronts, solid or veneered, are increasingly textured.



## Sanding Brushes

Use the sanding brush to treat all wooden surfaces. Only change the sanding flaps. With the two-part assembly of the individual brush elements of the ARMINIUS sanding brush, you protect the environment and save money at the same time.



## Slashed Abrasives

The slashed abrasive is changed separately from the backing-brush. This means that the brush loading can be utilised to the maximum.



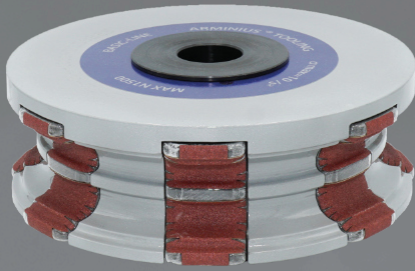
In order to utilise the full potential of your ARMINIUS sanding tools, we are at your side for every technical challenge.

From consultation and installation to commissioning on site - we are with you every step of the way. Our in-house measuring laboratory ensures the highest consistent quality through precise profile measurements.

Our goal - smooth sanding processes so that your production runs optimally! Benefit from our comprehensive technology and process consulting. Let our experts support you on site.

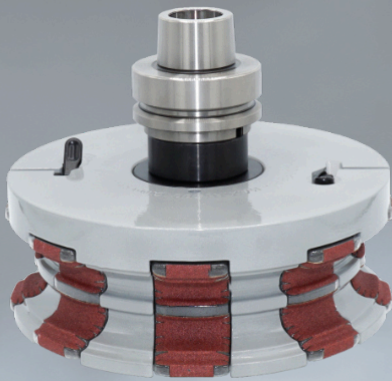
By working together with global shipping service providers, we offer the optimum logistics solution for your requirements - for fast and reliable provision of your tools and spare parts.

## ARMINIUS® Tool Variants



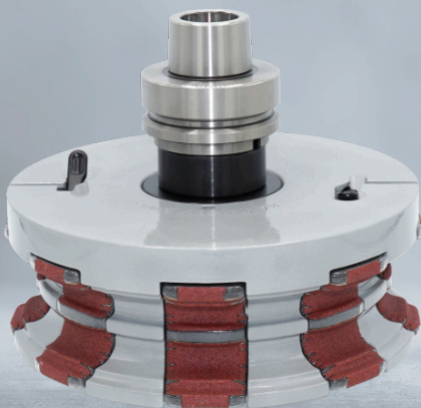
### Basic-Line

Sanding tool for various applications, available with changeable steel hubs for the bore.



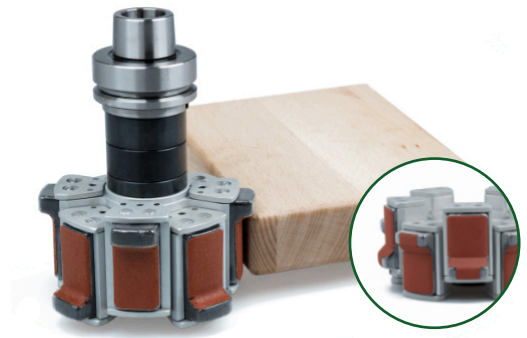
### Uni-Line

High-precision sanding tools for all levels of production applications. The tool is designed with a solid steel hub, able to change the sanding abrasives without removing the tool from the spindle.



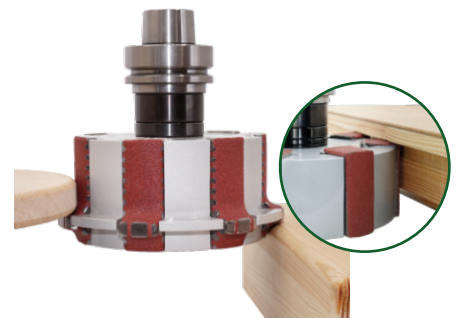
### Platinum-Line

Sanding tools for the high demands of CNC machining at higher speeds and feed rates. Quick tool-free segment change.



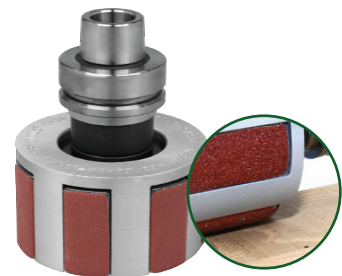
### Height-adjustable in two variants

Height-adjustable sanding tool with radius or chamfer for different work piece thicknesses.



### Radius/Chamfer Sander

Standard equipment for CNC machines as radius sander (R1-10mm and chamfer) for example for stair processing, as well as a rebate sander specifically designed for window and door manufacturing.

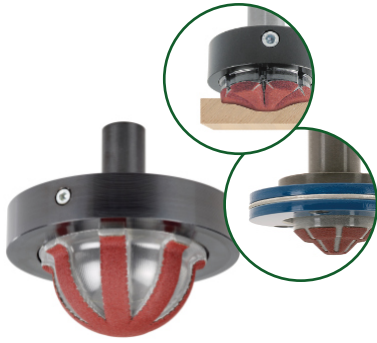


### Uni-Line - Straight Edge

Sanding tool for straight edges in various diameters and sanding heights.



## ARMINIUS® Application Examples



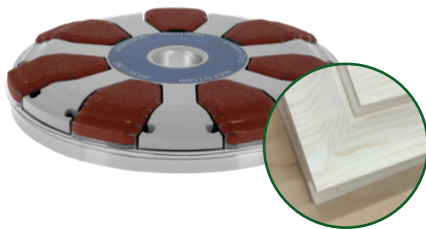
### Decorative Groove - Standard

Sanding tool for decorative grooves with few restrictions, designed for long-term use and rapid abrasive change.



### Hand Sander Pro

For professional hand sanding with replaceable sanding cap in all standard grit sizes.



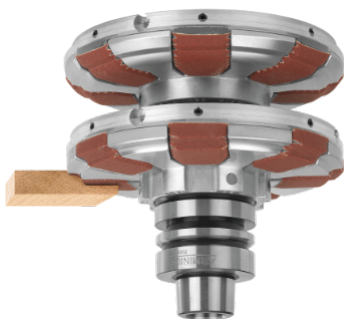
### Panel

Sanding tool for raised panel doors. With bore or shaft. Available in certain dimensions.



### Mounted Sanding Point

Mounted sanding points are specifically designed for the nesting process or for sanding small cutouts on conventional CNC machines.



### Panel Stacked

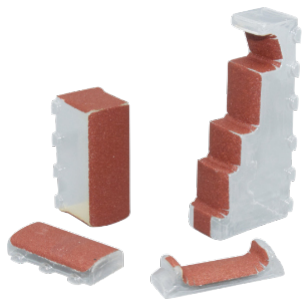
Sanding tool for raised panel doors with steel hubs. Available in certain dimensions.



### Aggregate

Aggregates with profile sanding tools or brushes for horizontal processing.

# ARMINIUS® Attachment Systems



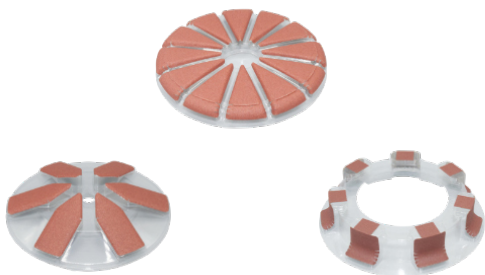
## Sanding Segments

Variable and quick replacement of prefabricated sanding segments in all common grit sizes.



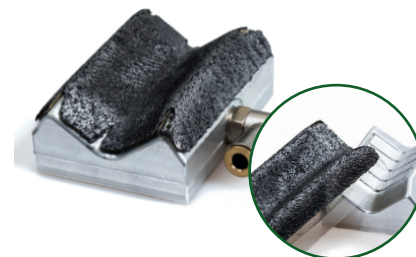
## Segment Strips

One piece system for fast exchange of refabricated segment strips in all standard grit sizes.



## Sanding Rings

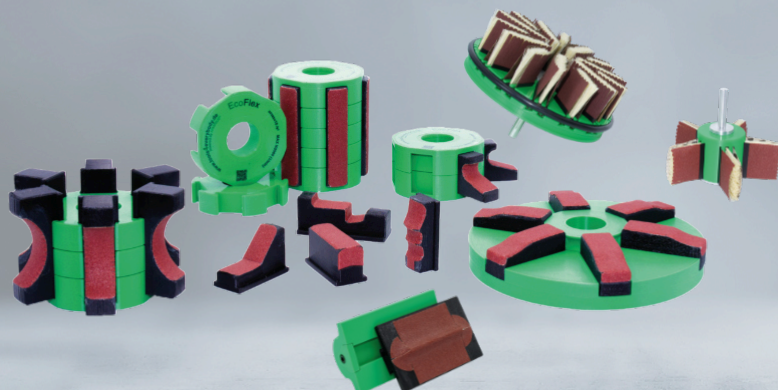
One piece system for fast replacement of prefabricated sanding rings in all common grit sizes.



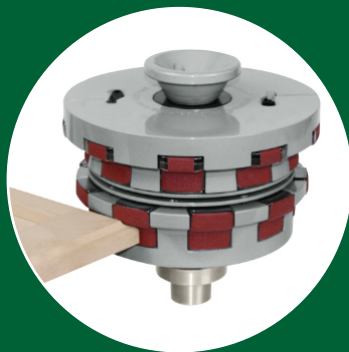
## Sanding Blocks

Aluminium sanding pad with replaceable graphite coating for long service life of the sanding pad and the abrasive. Alternatively also available in hardened steel.

[www.tools4everybody.de](http://www.tools4everybody.de)  
powered by ARMINIUS®







**ARMINIUS Schleifmittel GmbH**  
Paderborner Straße 65  
32760 Detmold  
Germany

Tel.: +49 (0) 52 31 - 94 55 0  
Fax: +49 (0) 52 31 - 94 55 99  
info@arminius.de  
www.arminius.de

**ARMINIUS Tooling Inc.**  
P.O. Box 68  
Foreston, MN 56330  
USA

Phone: +1 320 294 5900  
Fax: +1 320 294 5902  
info@arminiustooling.com  
www.arminiustooling.com

